



EN



Venus Plus LED MCT View

Optimal lighting, effective communication

The Venus Plus LED MCT View operating light has a 4K camera embedded in its framework. The camera sensor features liquid lens technology - optimal for dental practices - to ensure sharp, rapid focusing whatever the operating situation. The digital stabiliser guarantees excellent results, even where applications are incorporated in the dental unit. Venus LED MCT ensures that all treatment benefits from lighting calibrated to match actual clinical needs: warm 4300K light for surgery, neutral 5000K light for conservative dentistry and cold 5500K light for realistic colour capture.



4K
ULTRA HD



4K video

Venus LED MCT View records videos at definitions of up to 4K and captures images with a 13 MP resolution. The PC software lets users control all camera parameters and functions (e.g. start recording, image capture, zoom and Smart Focus).



Smart Focus

Thanks to liquid lens technology, camera focus can be digitally adjusted in mere moments. Focusing is done directly from the PC, via a key on the Full Touch control panel or via the touch-sensitive area on the operating light itself. Focusing is unaffected by any interference from sprays or objects in the operating area.



Multi Colour Temperature

Venus LED MCT View provides lighting with three different colour temperatures to suit all types of treatment: 4300K for precision surgery, 5000K for conservative restoration and 5500K for realistic colour capture. Composite mode is also available. This reduces the wavelength between 430 and 480 nm, optimising the material modelling time without interfering with polymerisation.



No-Touch sensor

The No-Touch sensor can be used to switch the operating light on/off and adjust light intensity up to 50,000 Lux.

Reliable technology for safe, comprehensive control

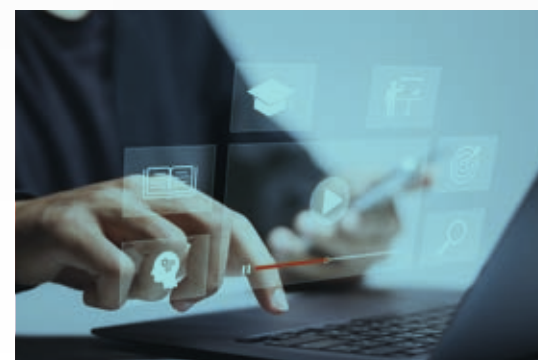
Integration and versatility

Connected directly to the practice PC, the MCT View operating light is easily managed via Venus View software, letting users adjust settings, record and save with ease. Different versions - incorporated in the dental unit, ceiling-mounted or wall-mounted - ensure adaptation to any practice set-up.



Clear communication and documentation

The integrated 4K camera lets practitioners illustrate the patient's oral health status clearly, improving transparency of communication and facilitating acceptance of treatment. Additionally, it is a useful teaching tool, streamlining clear, immediate sharing of clinical cases.



Secure recording and reliable storage

The system lets users document each stage of treatment, ensuring clinical cases are recorded flawlessly. Saved files ensure secure management of medical records and can be used for any legal or insurance purposes.

Safe, reliable, user-friendly technology



Full Touch: practicality and immediate control

Integration with the Full Touch panel allows 'fingertip' control of operating light functions (e.g. start recording, capture images, zoom in/out) without having to access the PC, thus reducing the risk of cross-contamination.



Voice-activated controls: hygienic and effective

Voice activation lets users manage the camera without any physical contact, improving hygiene and operational comfort.



Foot control: hygiene and safety

When activated in advanced mode, the foot control joystick lets users interact with the camera hands-free, improving both hygiene and efficiency.



Digital stabiliser: stable images for clarity of vision

The Venus MCT View digital stabilisation system eliminates any vibration caused by involuntary movement, ensuring consistent visual quality during all procedures.



**BU Medical Equipment
Sede Legale ed
Amministrativa
Headquarters**

CEFLA s.c.
Via Selice Provinciale, 23/a
40026 Imola (BO) - Italy
Tel. +39 0542 653111
Fax +39 0542 653344

Stabilimento / Plant

Via Bicocca, 14/C
40026 Imola (BO) - Italy
Tel. +39 0542 653441
Fax +39 0542 653601
www.mocom.it



03/2025

MMCTGB25IS00

Due to our policy of constant technological upgrading, technical specifications may be subject to change without prior notice.
According to the standards in force, in extra-EU areas the availability and specifications of some products and/or characteristics may vary. Please contact your local distributor for further information.

